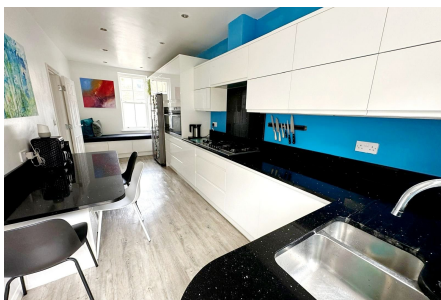


St Margaret's Banks, High Street, Rochester, ME1 1HY

£550,000

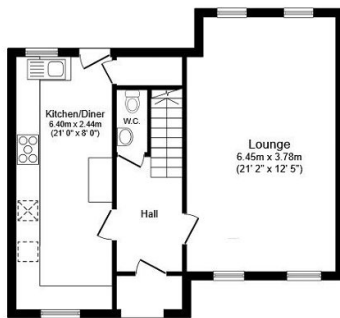
🛏 5 🛋 3 🚗 1



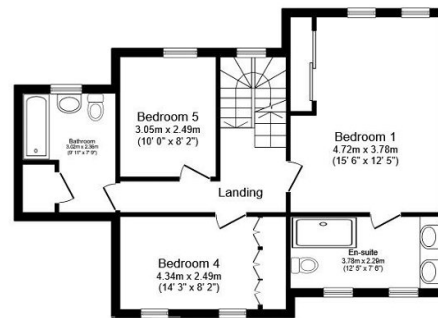
A substantial home located but a stone's throw away from an Historic town centre with a wide range of restaurants, coffee shops and high speed train station. Explore the abundance of space with multiple en suites, double bedrooms and contemporary decoration through as the current owners heavily renovated this home approximately 6 years ago. There's plenty of storage on offer in addition to a double garage that is currently used for a gym and workshop. QUOTE AP0490

Key Features

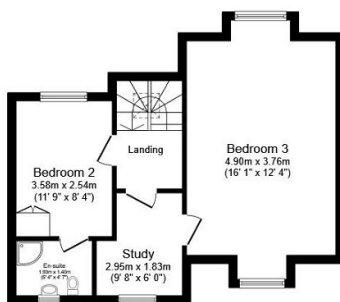
- Substantial 5 Double Bedroom Home
- Contemporary En Suites And Bathroom
- Landscaped Rear Garden
- Near to Riverside Walks
- Tenure Freehold / Council Tax Band E
- Stunning Modern Kitchen
- Great location for Schools
- Double Garage
- Walking Distance to High Speed Train Station & High Street
- QUOTE AP0490



Ground Floor



First Floor



Second Floor

This floor plan is for illustrative purposes only. It is not drawn to scale. Any measurements, floor areas (including any total floor area), openings and orientations are approximate. No details are guaranteed, they cannot be relied upon for any purpose and do not form any part of any agreement. No liability is taken for any error, omission or misstatement. A party must rely upon its own inspection(s). Powered by www.Propertybox.io